

## FACT SHEET

### COVE



Ground floor, drive-in infinity studio

Overhead 90 degree look-down gantry, 20 feet high from look-down

50 ft x 25 ft x 11 ft high, 8m x 6m x 2m

Free off-street parking

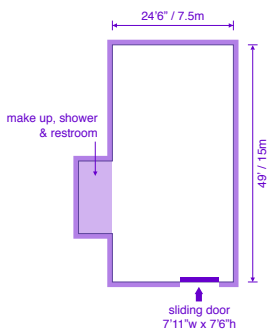
Music system and free wireless broadband

Separate changing room and make-up area with hair wash sink

Power supply, 13 amp sockets and 2 x 63 amp and 2 x 32 amp single phase outlets available

Catering, lighting, assistant and digital hire by request

Free tea and coffee all day



### EAT



First floor daylight food and still-life studio

30 ft x 15 ft x 12 ft high

Fully equipped kitchen with extra fridges and prep area

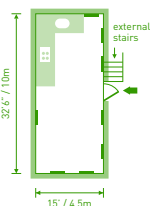
Free off-street parking

Music system and free wireless broadband

Power supply, normal 13 amp outlets

Catering, lighting, assistant and digital hire by request

Free tea and coffee all day



### LIGHT



Ground floor daylight loft-style studio space

60 ft x 40 ft x 15 ft high

Studio can be fully blacked out

Easy unloading access through large shutter doors

Free off-street parking

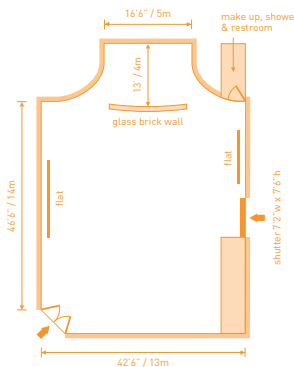
Music system and free wireless broadband

Separate changing room and make-up area with hair wash sink

Power supply, 13 amp sockets and 3 x 32 amp single phase outlets available

Catering, lighting, assistant and digital hire by request

Free tea and coffee all day



### FACTORY



Large versatile daylight location

60 ft x 40 ft x 25 ft high

Separate changing room, make-up area and shower

Studio can be fully blacked out

Free use of usual studio accessories, polyboards, trestles, etc

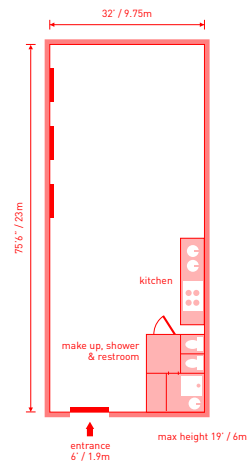
Parking available by arrangement

Music system and free wireless broadband

Power supply, 13 amp sockets and 3 x 63 amp single phase outlets available

Catering, lighting, assistant and digital hire by request

Free tea and coffee all day



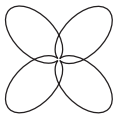
## ALL FOUR

All four studios at Plough combine to create an extensive versatile facility suitable for film and TV productions or complex still shoots.

Our large car park and off-street location allows great access and ample parking for RVs or catering vehicles.

Plenty of extra space for production, wardrobe, a green room, storage or catering if required.

The four studios have a total of 6500 square feet of shooting space with a variety of floor and wall finishes, three full kitchens and separate client areas.



## TERMS & CONDITIONS

### INSURANCE

Plough Studios Ltd cannot be held liable for any loss or damage to any equipment, valuables or props etc. The client will be liable to pay all damages in full to props / property damage and they must ensure they have adequate Public and Employees Liability Insurance to cover themselves, their visitors and staff in the event of an accident.

### BOOKINGS

Your booking can only be confirmed once this form has been signed and returned by fax to 020 7627 5169. Bookings are taken on an option basis. If any party is prepared to confirm at any time, their bookings will take priority after the previous options have been given the chance to confirm. Cancellation of a confirmation booking at any time, will incur a 50% charge.

### PAYMENT

Immediate payment, or subject to agreement, within 14 days.

### DELIVERIES / COLLECTIONS

All deliveries and collections must be completed within the time booked.

### SETBUILDING

All work must be completed within the time confirmed. Overtime available by prior arrangement.

### ADDITIONAL CHARGES AND INFORMATION

#### Hours

Normal Studio day from 9am - 6pm Monday - Friday.

#### Overtime

Stills @ £80.00 per hour / Film @ £120 per hour / Weekend rates available on request.

#### Parking

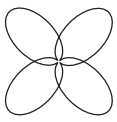
We have approximately 15 off street private parking spaces, available by prior arrangement.

#### For hire

Wind Machine @ £25.00 per day. Car Skates @ £25.00 per day. Complimentary white cubes and flats by prior arrangement.

#### WiFi

Complimentary Internet facilities.



## BOOKING & CONFIRMATION FORM

Please fill this form out, and fax back to: 020 7627 5169

Terms of payment: Immediate settlement or subject to agreement within 14 days

Attention of: **Studio Manager**

Date(s) of Shoot: .....

Job Reference: .....

Photographer: .....

Photographer's Mobile: .....

Client: .....

Client Telephone: .....

Invoice Name: .....

Invoice Address: .....

.....

Rate Per Day:

Amount of overtime required (@£80/hr): .....

Number of Crew: .....

Catering by request (numbers): .....

Other Requirements: .....

.....

.....

I confirm the above booking and have read and accept Plough Studios Ltd Terms and Conditions of hire, and agree to pay any additional charges incurred.

Signed and accepted: ..... Date:.....

Print: .....